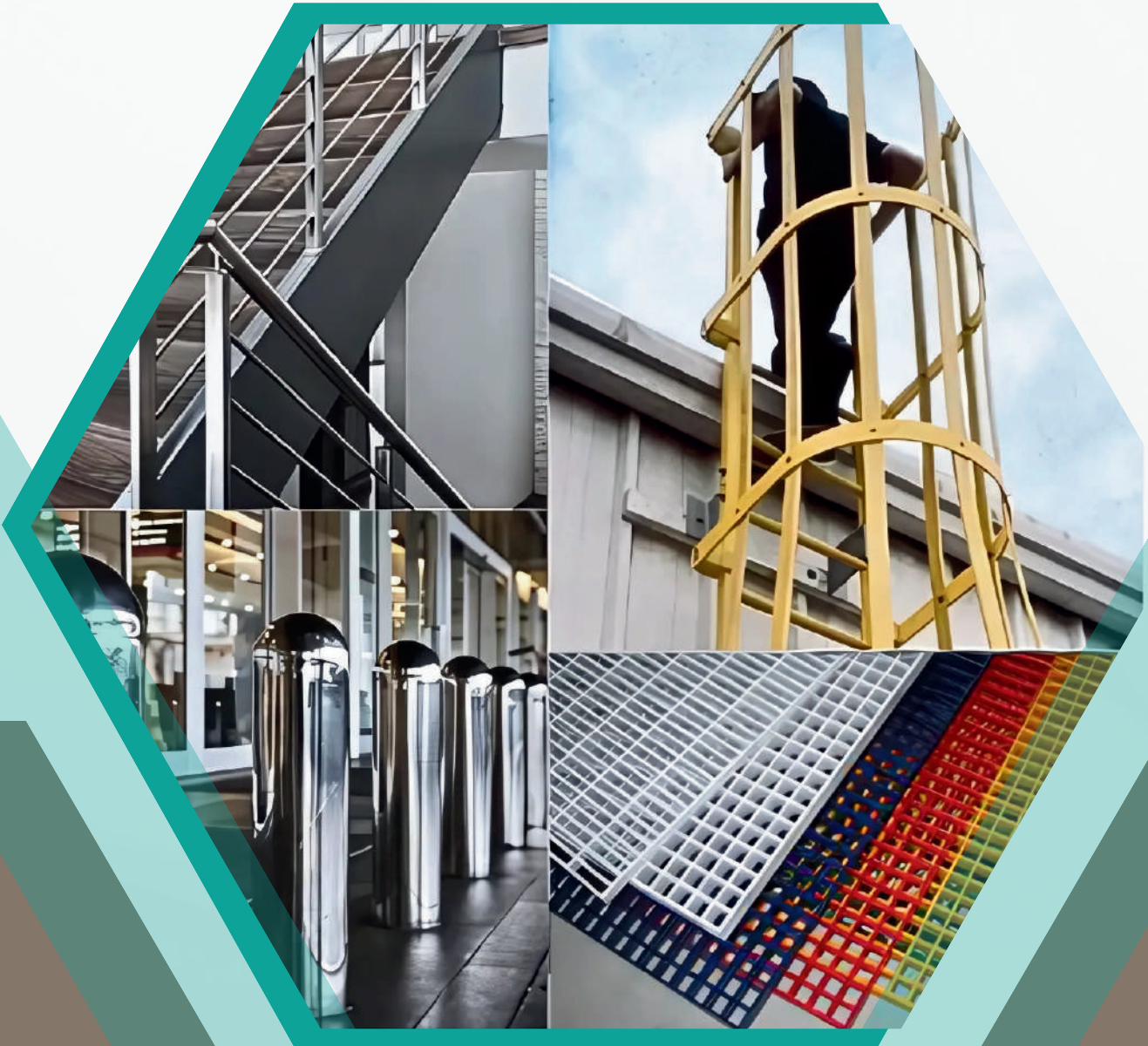


PRODUCT CATALOG



رؤية
VISION 2030
المملكة العربية السعودية
KINGDOM OF SAUDI ARABIA

TABLE OF CONTENTS

01	INTRODUCTION	01
02	OBJECTIVE	02
03	VISION & MISSION	03
04	MESSAGE FROM CEO	0
05	OUR SCOPE	05
06	RANGE OF PRODUCTS	06-12

→ **ARCHITECTURAL METAL WORKS DIVISION**

- Gratings
- Ladders
- Handrail
- Bollards
- Roof Hatch
- Checkered Plates & Access Panels
- Metal Fence & Gates
- Decorative Panels & Screens
- Parking Shades & Canopy
- Steel Downspouts & Strainers

→ **COMMERCIAL KITCHEN DIVISION**

- Kitchen Tables & Cabinets
- Kitchen Hood
- Channel Drain & Floor drain
- Grease Interceptor

07	HEAVY STEEL STRUCTURES	13
08	CONTRACTING DIVISION	14
09	CLIENTS & PARTNERS	15-16
10	QUALITY POLICY	17

INTRODUCTION

Faisal Ali Faleh Al-Qahtani Contracting Est – Silver Tech, established in 2001 and headquartered in Riyadh, is a leading provider of premium custom stainless steel and steel fabrication solutions across Saudi Arabia. We specialize in a diverse range of services, including custom fabrication, welding, sheet metal work, and structural steel fabrication, specifically tailored to meet the unique demands of various industries.

Serving a broad spectrum of sectors, including **Commercial, Industrial, Residential, and Government**, we take pride in delivering metalwork that combines **durability, precision, and aesthetic excellence**. Whether executing large-scale industrial projects or crafting intricate architectural components, our team of skilled professionals is equipped with the expertise and advanced tools to ensure exceptional results.

At **Faisal Ali Faleh Al-Qahtani Contracting Est**, we stand apart through our unwavering commitment to:

- **Fast turnaround times.**
- **Certified fabrication team** with extensive experience across diverse projects.
- **In-house design and fabrication capabilities.**
- **Competitive pricing**, without compromising on quality.

We believe that true strength lies not only in the materials we use but in the high standards we uphold in every project.



OBJECTIVE

Our primary objective is to surpass client expectations by delivering high-quality, cost-effective fabrication solutions, ensuring customer satisfaction at every stage. We provide inclusive consultation, offering a seamless experience from concept to completion.

VISION & MISSION



VISION

To offer unparalleled steel fabrication services that combine **innovation, quality,** and **precision,** building long-term partnerships with our clients while contributing to the success of their projects.



MISSION

To be the most trusted partner in providing world-class engineering management and fabrication solutions, driving success and delivering consistent results, every time.

MESSAGE FROM THE CEO

Your Trusted Partner in Professional Steel Fabrication

Dear Valued Partners and Team Members,

At **Faisal Ali Faleh Al-Qahtani Contracting Est- SilverTech**, we are dedicated to meeting the ever-evolving needs of the steel fabrication industry, serving diverse sectors such as **residential, commercial, industrial, and infrastructure projects**. As one of the leading manufacturers and suppliers of high-precision steel fabrication solutions, we bring a wealth of experience from both **local and international markets**.

Our team's capabilities continue to expand as we stay at the forefront of industry advancements. We take immense pride in ensuring that we maintain up-to-date information and offer innovative, reliable, and high-quality products and services to all our partners and clients. **Quality, reliability, and innovation** remain the cornerstone of everything we do.

We believe in fostering long-term relationships built on trust, expertise, and mutual success. Whether collaborating on a new project or delivering tailored solutions, we are committed to achieving excellence in every aspect of our work.

To learn more about our latest projects, services, and product offerings, please visit our website at **www.silvertechsaudi.com**.

Thank you for your continued trust and collaboration. We look forward to a future of shared success and growth.

Best regards,
Faisal Ali Faleh Al-Qahtani Contracting Est

CEO, Faisal Ali Faleh Al-Qahtani Contracting Est – SilverTech

OUR SCOPE

MANUFACTURING AND INSTALLATION OF MILD STEEL, STAINLESS STEEL

ALUMINIUM & FRP PRODUCTS.

(LIGHT, MEDIUM & HEAVY STRUCTURES)

We specialize in the manufacturing and installation of a wide range of high-quality metal products, including:

Gratings, Ladders, Bollards, Roof Hatch, Checkered Plates & Access panels, Metal Fence & Gates, Decorative Panels & Screens, Parking Shades & Canopy, Hospital Cabinets, Kitchen Hood, Cabinets & Tables, Grease Oil Interceptor, Showroom Frames & other custom fabrication.

Quality Assurance and Compliance

Our products meet both **international** and **Saudi** standards, ensuring they provide superior protection against **bacterial contamination, corrosion, and general wear and tear**. We adhere to the highest standards of manufacturing, providing products that stand up to the demands of various industries, **including industrial construction, commercial, residential, institutional, and hospitality**.

We are committed to **high-quality fabrication** and **custom designs**, ensuring that every product is crafted to meet your specific needs. All materials used in production are in full compliance with **international codes** and **GCC standards** for steel strength, safety, and environmental regulations.

INDUSTRY

STANDARDS AND CODES

We ensure that our products and processes comply with **international** and **GCC fabrication standards**, which include:

- **ISO 9001:** Quality management systems, ensuring our commitment to consistent quality and continuous improvement in all aspects of manufacturing.
- **ASTM A36:** Standard specification for carbon structural steel, ensuring the integrity of mild steel products used in construction and fabrication.
- **ASTM A240:** Standard specification for chromium and chromium-nickel stainless steel plate, sheet, and strip for pressure vessels and general applications, ensuring high-quality stainless steel products.
- **GCC Standard 2071:** A set of structural steel fabrication standards required across GCC member countries, ensuring safety and quality in all fabricated steel products.
- **ISO 12944:** Standard for corrosion protection of steel structures, ensuring our coatings and finishes provide the highest level of protection for steel products in industrial and marine environments.
- **GSO 1700:** Gulf Standards Organization code for the design, fabrication, and installation of metal structures, ensuring compliance with local and regional regulations for construction and industrial products.
- **ISO 14001:** Environmental management standards that guide our fabrication processes to minimize environmental impact and promote sustainability in all operations.

Customization and Expertise



Our highly trained in-house design and manufacturing team works closely with you to tailor each product to your specifications. We are dedicated to offering **strategic planning** and **implementation** to meet your precise needs, whether it's for **industrial applications**, **commercial establishments**, or **residential** projects.

All the materials we use comply with **international** and **GCC safety** and **health** regulations, guaranteeing that your projects are both safe and compliant. Whether you're working on **large-scale industrial projects** or **custom architectural designs**, **Faisal Ali Faleh Al-Qahtani Contracting Est – SilverTech** ensures that **precision**, **sustainability**, and **quality** are at the forefront of everything we do.

We have the expertise and capability to handle all your fabrication needs, and we are committed to providing top-tier solutions that meet the highest standards in the industry.

RANGE OF PRODUCTS

Architectural Metalworks Division

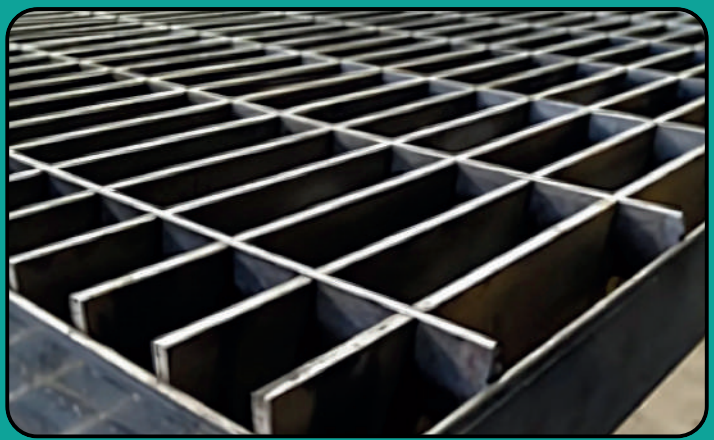
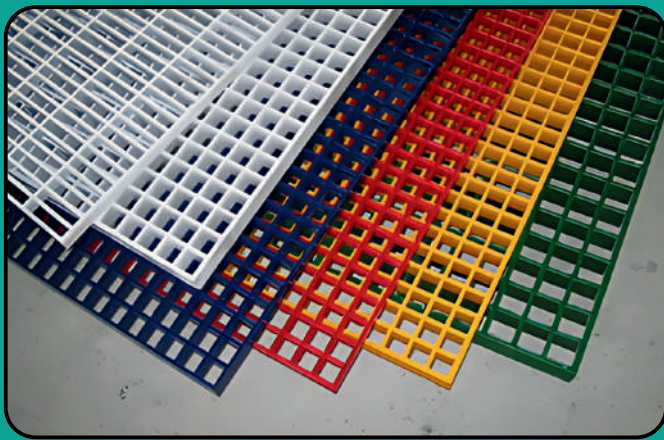
Gratings

Heavy-duty gratings for flooring, walkways, and drainage. Strong, corrosion-resistant, for indoor/outdoor use.

Types : Press-lock, Pass-through, Electro-forged, Unidirectional, FRP Gratings (H38/H25, Mesh 38×38mm, Fire Retardant ASTM E84 <25, Custom Colors).

RawMaterial : ASTM A36, SS (304/304L/316/316L), FRP.

Finish : Mill, HDG (A36), Matt (SS), Epoxy, Powder Coated.



Ladders

Industrial ladders for safe access to platforms, rooftops, and machinery.

Types : Cage, Non-Cage, Step Ladders.

Raw Material : ASTM A36, SS (304/304L/316/316L), Aluminum, FRP.

Specs : Length 2–12 m (up to 5.2 m without cage), Width 400–700 mm.

Finish : Mill, HDG (A36), Matt (SS), Powder Coated.



Handrails

Safety handrails for stairs, ramps, and elevated platforms.

Types : Wall-mounted, Floor-mounted, Glass Handrail, Balustrade.

Raw Material : ASTM A36, SS (304/304L/316/316L), Aluminum, FRP.

Finish : Mill, HDG (A36), Matt (SS), Powder Coated.



Bollards

Description: Protective bollards used to control traffic, safeguard pedestrian areas, and secure property. These bollards are available in a variety of materials and finishes to ensure durability and weather resistance, making them suitable for high-traffic urban areas.

Raw Material: ASTM A36 , SS (304/304L/316/316L).

Finish: Hot-Dip Galvanized, Epoxy Painted, or Powder Coated.



Roof Hatch

Description: Protective bollards used to control traffic, safeguard pedestrian areas, and secure property. These bollards are available in a variety of materials and finishes to ensure durability and weather resistance, making them suitable for high-traffic urban areas.

Raw Material: ASTM A36 Aluminum , MG , SS (304/304L/316/316L).

Finish: Hot-Dip Galvanized, Epoxy Painted, or Powder Coated.

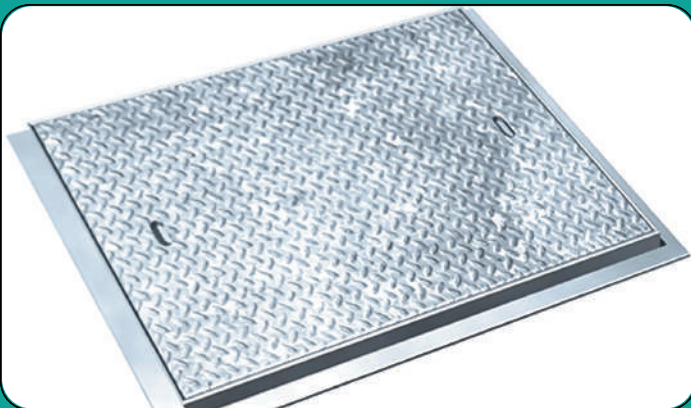


Checkered Plates & Access Panels

Description: Non-slip checkered plates and access panels ideal for flooring, stair treads, and maintenance access points. These products are designed for heavy-duty use, offering strength and safety in both industrial and commercial environments.

Raw Material: ASTM A36 Aluminum , MG , SS (304/304L/316/316L).

Finish: Hot-Dip Galvanized, Epoxy Painted, or Powder Coated.



Metal Fence & Gates

Description: Durable and secure fences and gates designed for both residential and commercial applications. These fences provide protection and privacy while withstanding harsh weather conditions. Available in multiple materials for tailored solutions.

Raw Material: ASTM A36 Aluminum , SS (304/304L/316/316L).

Finish: Hot-Dip Galvanized, Epoxy Painted, or Powder Coated.



Decorative Panels & Screens

Description: Stylish and functional panels and screens used for architectural enhancement and privacy. These products are perfect for facades, outdoor spaces, and interior applications, combining form and function. We use laser cutting technology to create intricate and detailed designs that add a modern, elegant touch to any space.

Raw Material: ASTM A36 Aluminum , SS (304/304L/316/316L).

Finish: Hot-Dip Galvanized, Epoxy Painted, or Powder Coated.



Parking Shades & Canopy

Description: Robust and weather-resistant parking shades and canopies designed to protect vehicles from the elements. Ideal for use in commercial parking lots, residential complexes, and industrial sites.

Raw Material: ASTM A36 , SS (304/304L/316/316L).

Finish: Hot-Dip Galvanized, Epoxy Painted, or Powder Coated.

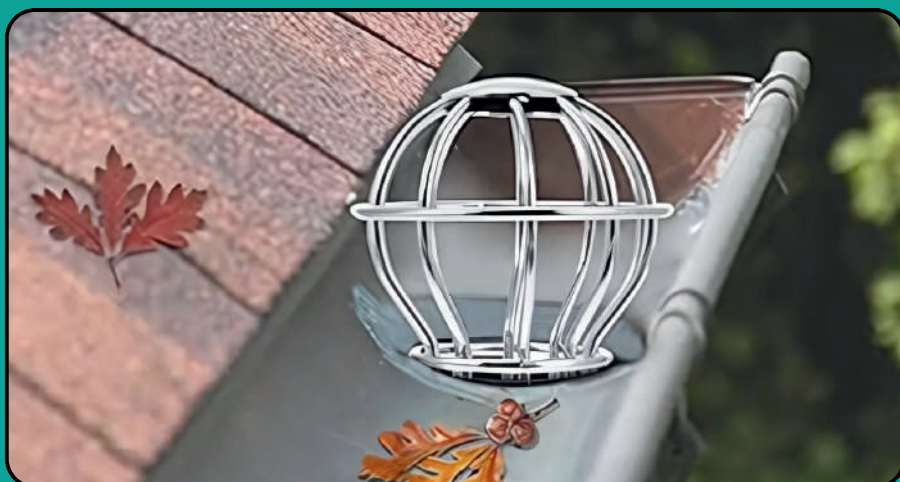


Steel Downspouts & Strainers

Description: Efficient water drainage systems designed to direct rainwater away from building foundations. These downspouts and strainers help prevent water damage and ensure proper drainage, making them ideal for both residential and commercial applications.

Raw Material: ASTM A36 , SS (304/304L/316/316L).

Finish: Hot-Dip Galvanized, Epoxy Painted, or Powder Coated.



Commercial Kitchen Division

Kitchen Tables & Cabinets

Heavy-duty stainless steel kitchen furniture (tables, cabinets, wash basins) for hygiene and durability.

Raw Material : SS (304/304L/316/316L), ASTM A36.

Sheet Thickness: 1.0, 1.2, 1.5 mm.

Finish : Polished, Satin, Mill, HDG (A36), Matt (SS), Powder Coated.



Kitchen Hood

Description: Stainless steel kitchen hoods designed for efficient ventilation. These hoods remove smoke, steam, and odors, maintaining a clean and safe environment in commercial kitchens. The stainless steel construction ensures longevity and ease of maintenance.

Raw Material: Stainless Steel.

Finish: Polished or Satin.



Channel & Floor Drains

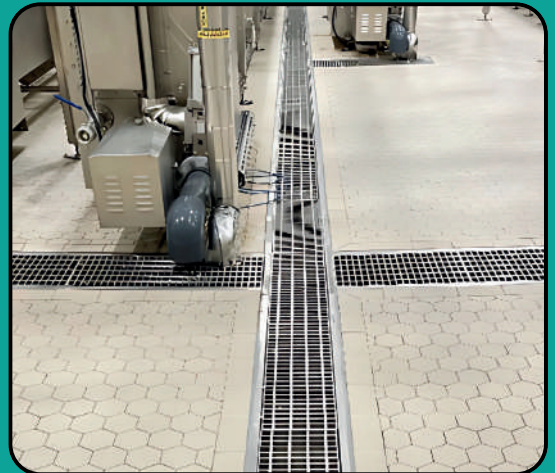
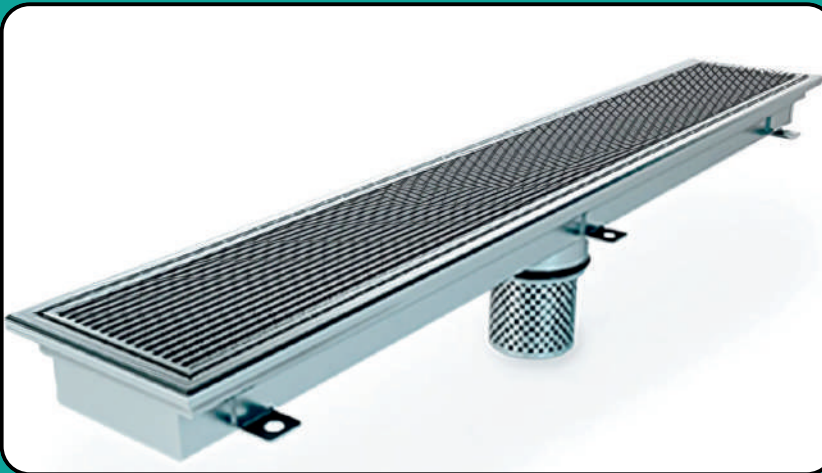
Drains for smooth water flow, hygiene, and prevention of pooling.

Type : Press-lock or Slotted Hole Gratings.

Width Options: 100, 150, 240, 300 mm.

Raw Material: SS (304/304L/316/316L), ASTM A36.

Finish: Matt (SS), HDG (A36), Powder Coated.



Grease Interceptors

Traps grease and oils, preventing blockages and ensuring compliance with hygiene standards.

Type : Press-lock or Slotted Hole Gratings.

Width Options: 100, 150, 240, 300 mm.

Raw Material: SS (304/304L/316/316L), ASTM A36.

Finish: Matt (SS), HDG (A36), Powder Coated.



HEAVY STEEL STRUCTURES

Designed for maximum load-bearing capacity, durability, and compliance with international standards.

Sizes / Sections: I-Beams, H-Beams, Channels, Angles, Box Sections, Custom Profiles.

Thickness Range: 6 mm – 100 mm

Material Options: ASTM A36, ASTM A572 Gr.50, SS (304/304L/316/316L).

Finish: Hot-Dip Galvanized (HDG), Powder Coated, Epoxy Painted, Natural Steel.

Applications: Warehouses, Bridges, Factories, High-Rise Buildings, Industrial Plants.

Standards: ASTM, AISC, BS, EN, ISO.



CONTRACTING DIVISION

At **Faisal Ali Faleh Al-Qahtani Contracting Est- Silver Tech**, we provide **comprehensive construction and MEP services** for residential, commercial, industrial, government, and healthcare projects.

Our Expertise

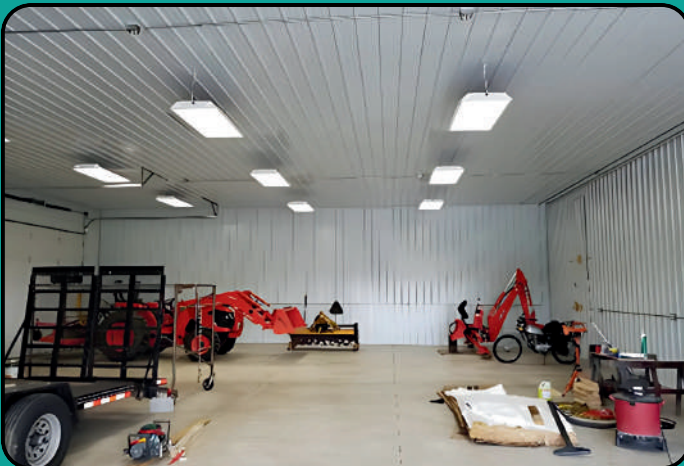
- **Electrical Works** – HV/LV Systems, Distribution, Lighting, Cable Laying (IEC, NEC, SASO).
- **Mechanical Works** – HVAC, Plumbing, Firefighting (NFPA, ASHRAE, SMACNA).



- **Civil & Infrastructure** – Excavation, Roadworks, Steel & Concrete Structures.



- **Architectural Finishing** – Metal Works, Flooring, Ceilings, Painting & Fit-outs.



CLIENTS AND PARTNERS



حديقة الملك سلمان
King Salman Park



نيوم NEOM



sinoma





EHCCO

شركة إعمار الحديد للمقاولات



KAFD

مركز الملك عبد الله المالي



Qiddiya

بندہ
Panda



中国电建
POWERCHINA



中国水电
SINSHYDRO



LINGYUN OVERSEAS



电建铁军
TIEJUN



Hayat
INTERNATIONAL PROJECTS

inma
e a s t

SMAC



Aldheeshi Factory

QUALITY POLICY

It is the policy of **Faisal Ali Faleh Al-Qahtani Contracting Est** in terms of Steel & Stainless-Steel Handrails, Ladder & Gratings, Stainless Steel Channel Drains, Floor Drains, Grease Interceptors, Kitchen Hood, Kitchen Table & Cabinets, Roof Hatches, Bollards, Chequered Plates & Access Panels, Metal Fences & Gates, Decorative Panels& Screens, Parking Shades & Canopy to:

- Provide services of the highest possible standards, to satisfy our customer needs, expectations of quality, safety, reliability and service.
- Accomplish quality objectives by establishing, implementing and maintaining a documented effective Quality Assurance System which complies with the requirements of **ISO 9001:2015**.
- Timely delivery of Services to meet our customer's requirements.
- Ensure our employees are competent and properly trained so they are better able to serve our customers.
- Our policy requires our employees to be aware of and contribute to the continual improvements of the Quality Management System.



Mohamad Moobin
Quality Manager



CONTACT US:



sales@silvertechsaudi.com



+966 53 592 4981



Street - Hurub 3504 , Al Mishael Dist. 6871 , Riyadh
Postal code 14327, Kingdom Of Saudi Arabia



Visit our website
www.silvertechsaudi.com